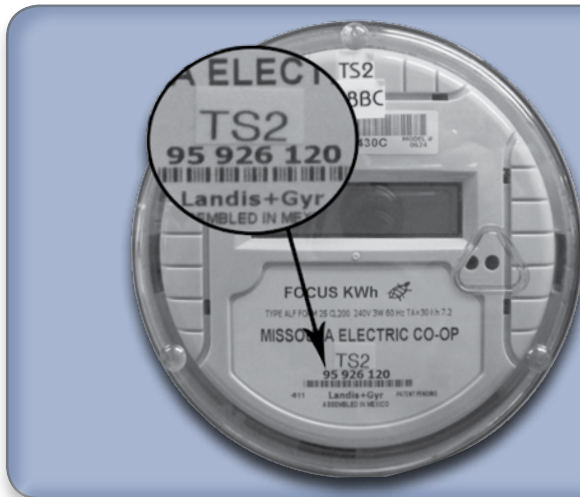


# MOVING IN AND YOUR METER

**Electronic Meter**



**Mechanical Meter**



## YOUR ELECTRIC METER

When you move in, be sure to locate your meter and note the meter number. Your meter will either be a mechanical or an electronic meter. Your meter number will be located at the bottom of the meter as indicated in the above illustration.

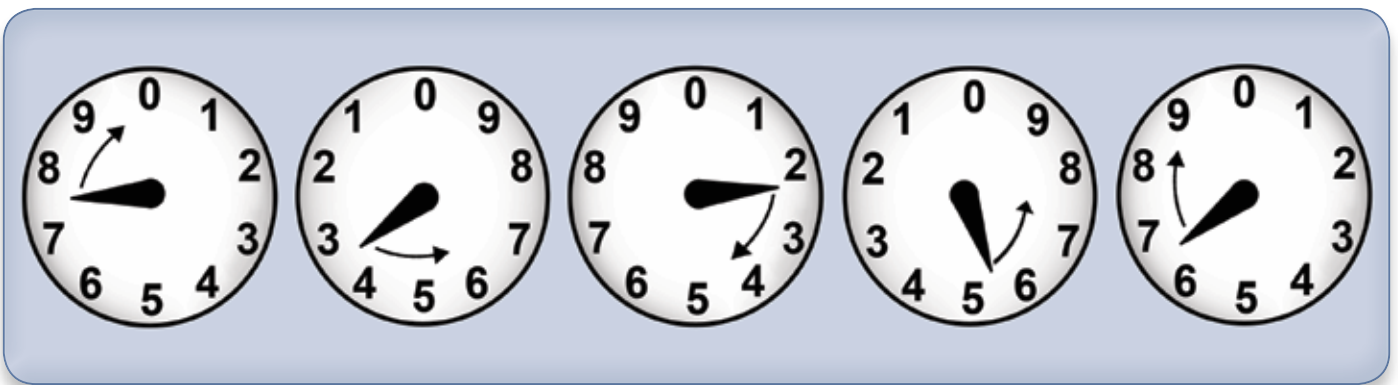
## READING YOUR ELECTRIC METER

Your electric meter measures the amount of electricity you use in a kilowatt-hour (kWh). One kWh is equal to using 1,000 watts of electricity for 1 hour. Your monthly electric bill is based on the amount of kWh you use.

The example below shows the dials on a five-dial

meter. (Most meters have five dials; some have four.) To read the meter, begin with the right-hand dial (e) and record numbers right-left (e-a).

The pointers of the dials move in the direction of the arrows. When a pointer is between two numbers (as in dial "d"), write down the lower number, the number the pointer has gone past. If the pointer is on a number, look at the dial to the right of it. If the pointer has not passed 0, record the smaller number. If the pointer on the dial to the right has passed 0, record the number closest to the left pointer. The example below would be read as **73256**.



1700 W BROADWAY MISSOULA, MT 59808

PHONE 406-541-4433 800-352-5200 FAX 406-541-6318

Missoula Electric Cooperative is an equal opportunity provider and employer.